

Transducers

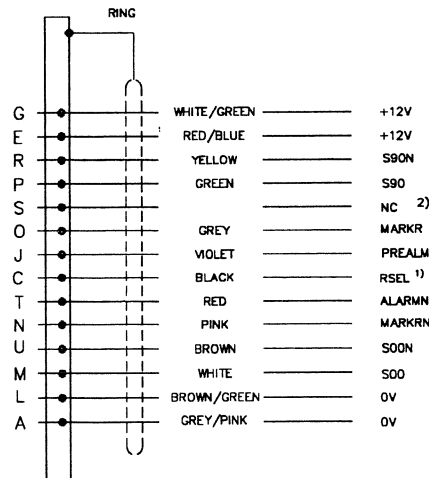
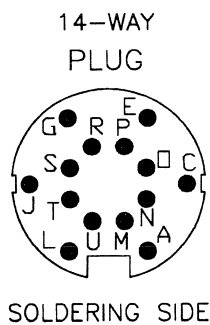
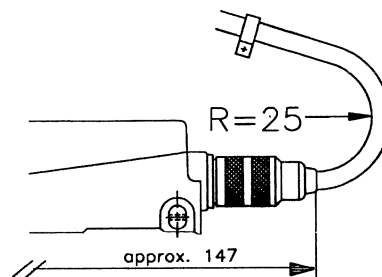
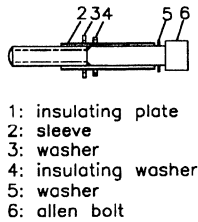
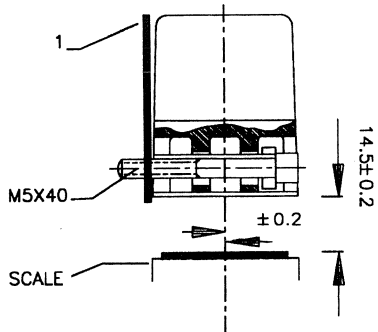
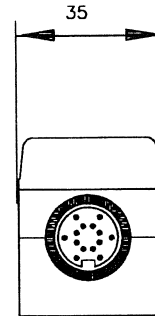
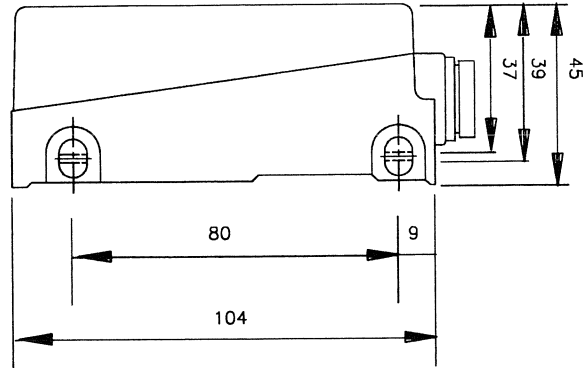
PE2520/00/10 *)

PE2522/00/10

Installation data

/00 version

*) PE2520 = PE2522 without connector cable part.



TO
SUBSEQUENT
ELECTRONICS
PHILIPS
MACHINE TOOL

CABLE ORDER CODE 4022 228 14661

- 1) RSEL=0 (connected to 0V) for 0.1 μm
- RSEL=1 (connected to +5V) for 0.5 μm
- 2) To AREA in case of PE2520/10

For detailed installation information refer to installation manual
PE2520/00/10. (Order code: 4822 873 20428)

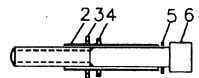
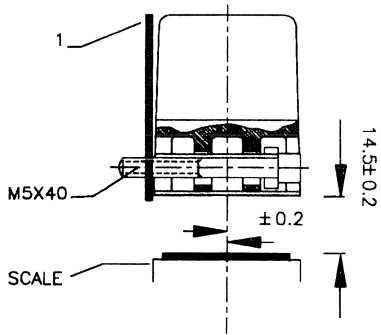
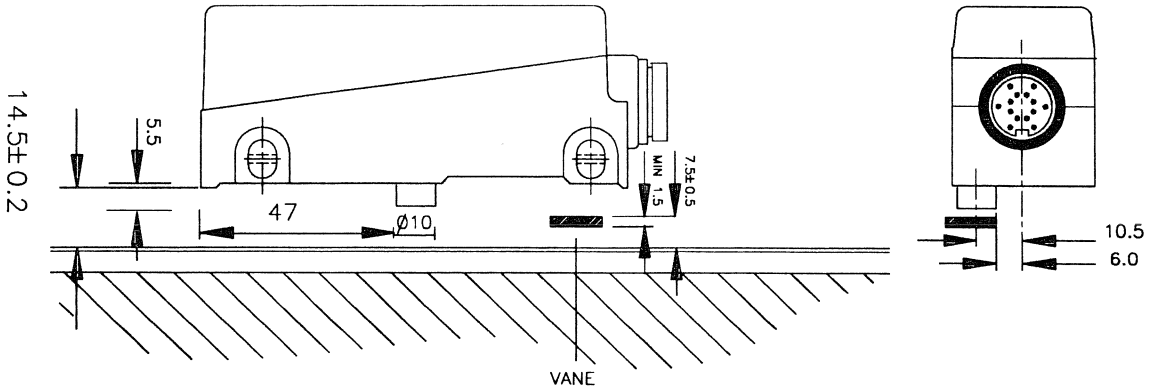
4822 873 20429
910201

NB9090

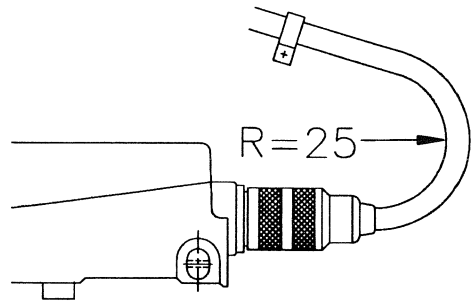


PHILIPS

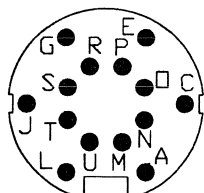
/10 version



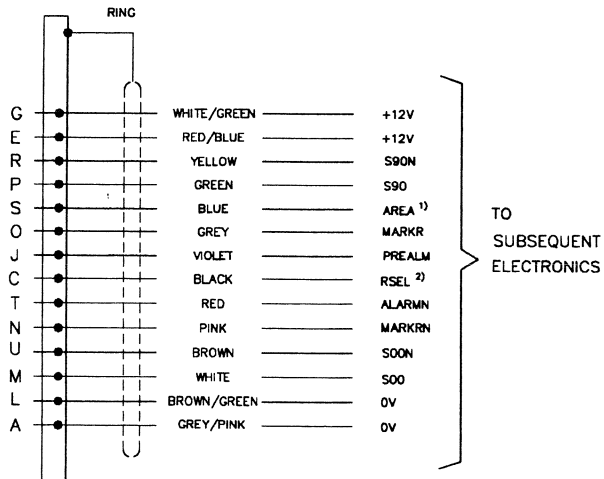
- 1: insulating plate
- 2: sleeve
- 3: washer
- 4: insulating washer
- 5: washer
- 6: allen bolt



14-WAY BINDER PLUG



PINSIDE



¹⁾ Not connected in case of 2520/00

²⁾ RSEL=0 (connected to 0V) for 0.1 μm
RSEL=1 (connected to +5V) for 0.5 μm

For detailed installation information refer to installation manual
PE2520/00/10.

NB9089